

Lampiran

Data Indikator Daya Saing Furniture Indonesia di Amerika Serikat (dalam USD)

Tahun	Ekspor Furniture Indonesia ke AS	Total Ekspor Indonesia ke AS
1986	181,275,632	6,794,638,848
1987	3,010,479	3,348,715,520
1988	12,103,014	3,073,717,760
1989	33,540,000	3,473,324,032
1990	54,413,208	3,364,580,352
1991	67,966,256	3,508,495,616
1992	86,460,536	4,419,086,848
1993	134,147,992	5,229,773,312
1994	163,342,224	5,828,543,488
1995	164,528,032	6,321,696,768
1996	181,264,096	6,794,638,848
1997	136,049,904	7,154,457,088
1998	113,468,176	7,045,718,528
1999	323,021,706	6,907,973,718
2000	434,496,167	8,488,730,739
2001	446,600,530	7,761,327,774
2002	492,490,876	7,570,467,254
2003	443,662,283	7,386,381,444
2004	486,036,682	8,787,069,944
2005	550,655,862	9,889,195,575
2006	589,432,201	11,259,135,631
2007	558,510,242	11,644,198,464
2008	526,243,594	13,079,933,994
2009	457,627,668	10,889,078,628
2010	530,562,218	14,301,875,648
2011	520,224,937	16,497,615,839
2012	566,493,380	14,910,181,324
2013	628,456,644	15,741,131,921
2014	635,436,121	16,560,075,701
2015	656,597,675	16,268,488,416
2016	607,554,101	16,171,284,269

Tahun	Ekpor furniture dunia ke AS	Total Ekspor dunia ke AS
1986	10,038,320,539	817,627,145,588
1987	5,056,728,064	424,037,187,584
1988	5,202,769,408	460,259,721,216
1989	5,405,280,125	493,005,752,701
1990	5,509,279,591	517,524,432,261
1991	5,335,681,581	508,944,033,884
1992	5,885,760,862	553,496,473,571
1993	6,690,599,479	603,153,591,727
1994	8,080,097,398	689,029,922,860
1995	8,887,392,256	770,821,455,872
1996	9,960,547,264	817,627,145,588
1997	11,723,466,865	898,025,469,114
1998	14,117,299,319	944,350,087,088
1999	17,433,900,315	1,059,220,066,421
2000	18,922,934,300	1,217,932,974,446
2001	18,610,307,250	1,140,900,159,185
2002	23,391,159,917	1,200,095,833,882
2003	26,757,959,375	1,302,833,508,196
2004	30,690,605,242	1,525,304,217,271
2005	34,014,322,505	1,734,849,141,777
2006	36,244,896,974	1,918,997,094,449
2007	37,775,431,325	2,017,120,776,311
2008	35,158,413,995	2,164,834,031,060
2009	27,272,508,482	1,601,895,815,130
2010	34,819,743,702	1,968,259,900,993
2011	35,982,293,636	2,263,619,062,869
2012	38,631,016,630	2,334,677,716,383
2013	41,164,084,212	2,326,590,208,528
2014	44,797,171,471	2,410,855,476,207
2015	49,236,739,071	2,313,424,569,327
2016	50,657,083,556	2,248,208,943,026

Data Variabel

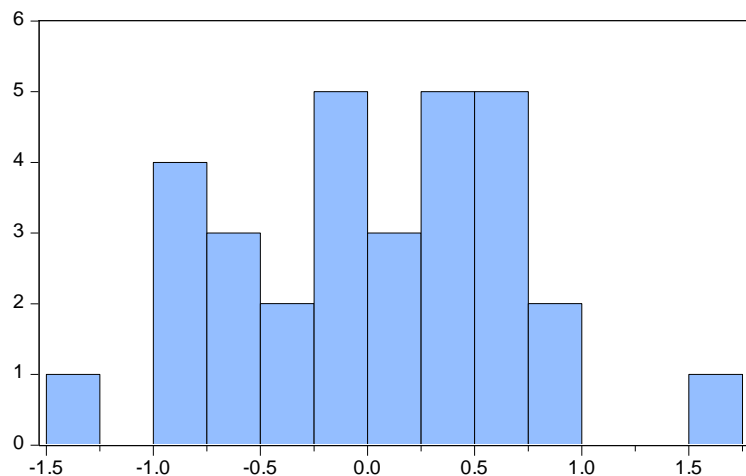
Tahun	Daya saing	Kurs	GDP Amerika
1986	0,07	1641	4,59016E+12
1987	0,07	1650	4,87022E+12
1988	0,34	1729	5,25263E+12
1989	0,88	1795	5,65769E+12
1990	1,51	1901	5,97959E+12
1991	1,84	2308	6,17404E+12
1992	1,82	2383	6,5393E+12
1993	2,28	4650	6,87872E+12
1994	2,58	8025	7,30876E+12
1995	2,18	7100	7,66404E+12
1996	2,8	2383	8,1002E+12
1997	1,2	4650	8,60852E+12
1998	1,07	8025	9,08917E+12
1999	2,84	7100	9,66062E+12
2000	3,29	9595	1,02848E+13
2001	3,52	10400	1,06218E+13
2002	3,33	8940	1,09775E+13
2003	2,92	8465	1,15107E+13
2004	2,74	9290	1,22749E+13
2005	2,84	9830	1,30937E+13
2006	2,77	9020	1,38559E+13
2007	2,59	9419	1,44776E+13
2008	2,52	10950	1,47186E+13
2009	2,52	9400	1,44187E+13
2010	2,13	8991	1,46944E+13
2011	2,02	9068	1,55179E+13
2012	2,29	9670	1,61553E+13
2013	2,25	12189	1,66915E+13
2014	2,06	12440	1,74276E+13
2015	1,89	13795	1,81207E+13
2016	1,66	13436	1,86245E+13

Hasil Regresi berganda

Dependent Variable: Y
 Method: Least Squares
 Date: 08/07/18 Time: 22:14
 Sample: 1986 2016
 Included observations: 31

Variable	Coefficient	Std. Error	t-Statistic	Prob.
C	8.764636	17.70047	0.495164	0.6243
X1	1.112768	0.411337	2.705249	0.0115
X2	-0.546669	0.697259	-0.784025	0.4396
R-squared	0.446784	Mean dependent var		2.090968
Adjusted R-squared	0.407268	S.D. dependent var		0.902202
S.E. of regression	0.694597	Akaike info criterion		2.200796
Sum squared resid	13.50903	Schwarz criterion		2.339569
Log likelihood	-31.11234	Hannan-Quinn criter.		2.246033
F-statistic	11.30656	Durbin-Watson stat		1.090692
Prob(F-statistic)	0.000251			

Uji Normalitas



Series: Residuals	
Sample 1986 2016	
Observations 31	
Mean	-6.52e-16
Median	0.003612
Maximum	1.630942
Minimum	-1.387208
Std. Dev.	0.671045
Skewness	-0.006705
Kurtosis	2.766382
Jarque-Bera	0.070728
Probability	0.965254

Uji Multikolinearitas

Variance Inflation Factors
Date: 08/07/18 Time: 22:40
Sample: 1986 2016
Included observations: 31

Variable	Coefficient Variance	Uncentered VIF	Centered VIF
C	313.3067	20131.00	NA
X1	0.169198	830.6931	5.523101
X2	0.486170	28010.96	5.523101

Uji Heterokedastisitas

Heteroskedasticity Test: Glejser

F-statistic	1.123030	Prob. F(2,28)	0.3395
Obs*R-squared	2.302048	Prob. Chi-Square(2)	0.3163
Scaled explained SS	1.925436	Prob. Chi-Square(2)	0.3819

Test Equation:
Dependent Variable: ARESID
Method: Least Squares
Date: 08/07/18 Time: 22:40
Sample: 1986 2016
Included observations: 31

Variable	Coefficient	Std. Error	t-Statistic	Prob.
C	1.455759	9.879144	0.147357	0.8839
X1	-0.153898	0.229579	-0.670349	0.5081
X2	0.014119	0.389160	0.036280	0.9713

R-squared	0.074260	Mean dependent var	0.537716
Adjusted R-squared	0.008135	S.D. dependent var	0.389261
S.E. of regression	0.387675	Akaike info criterion	1.034465
Sum squared resid	4.208167	Schwarz criterion	1.173238
Log likelihood	-13.03421	Hannan-Quinn criter.	1.079702
F-statistic	1.123030	Durbin-Watson stat	1.129927
Prob(F-statistic)	0.339507		

Uji Autokorelasi

Breusch-Godfrey Serial Correlation LM Test:

F-statistic	2.804953	Prob. F(2,26)	0.0789
Obs*R-squared	5.501665	Prob. Chi-Square(2)	0.0639

Test Equation:

Dependent Variable: RESID

Method: Least Squares

Date: 08/07/18 Time: 22:41

Sample: 1986 2016

Included observations: 31

Presample missing value lagged residuals set to zero.

Variable	Coefficient	Std. Error	t-Statistic	Prob.
C	-5.795641	17.46229	-0.331895	0.7426
X1	-0.180880	0.424727	-0.425873	0.6737
X2	0.245888	0.693818	0.354399	0.7259
RESID(-1)	0.471957	0.199995	2.359841	0.0261
RESID(-2)	-0.100862	0.216942	-0.464925	0.6459

R-squared	0.177473	Mean dependent var	-6.52E-16
Adjusted R-squared	0.050930	S.D. dependent var	0.671045
S.E. of regression	0.653733	Akaike info criterion	2.134454
Sum squared resid	11.11154	Schwarz criterion	2.365743
Log likelihood	-28.08404	Hannan-Quinn criter.	2.209849
F-statistic	1.402477	Durbin-Watson stat	1.723406
Prob(F-statistic)	0.260859		