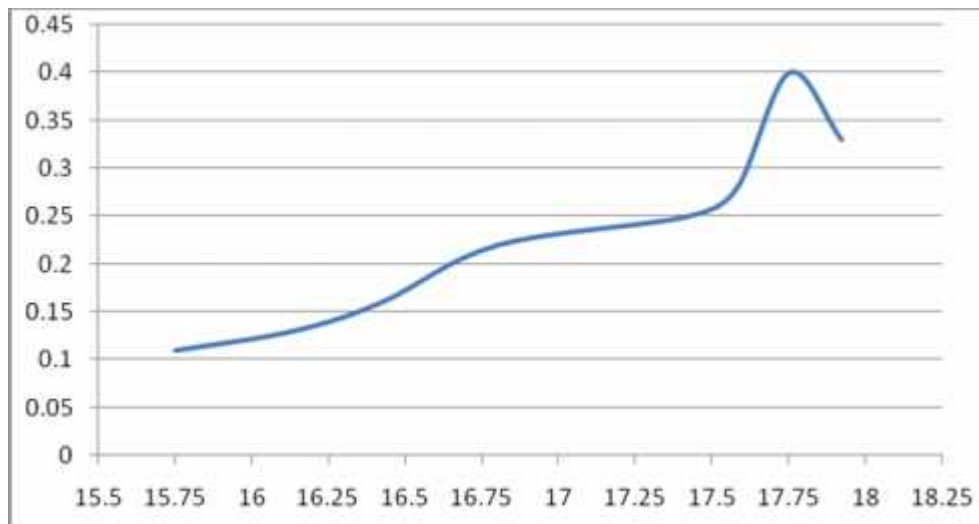


Lampiran

Hasil Survey Lapangan Debit dan Sedimen

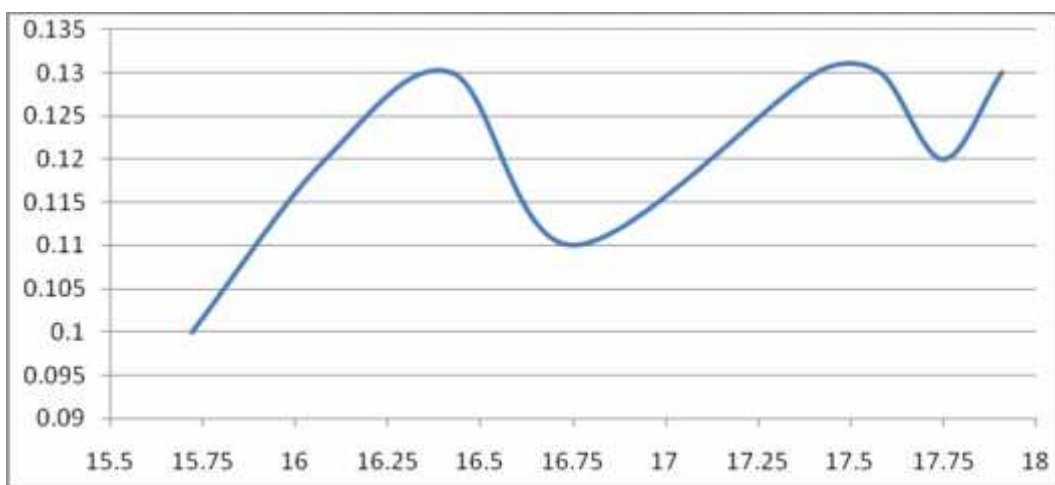
Inlet 1 (Kali Baru)

Grafik 4. Debit Sedimen Inlet 1



Inlet 2 (Kali Sugutamu)

Grafik 5. Debit Sedimen Inlet 2



Kali Baru

inlet 1			
bulan	kumulatif hujan harian >20mm	hujan saat pengukuran	volume air
jan	352	43	16134.69767
feb	305	43	13980.34884
mar	141	43	6463.046512
apr	104	43	4767.069767
mei	63	43	2887.744186
jun	85	43	3896.162791
jul	83	43	3804.488372
agust	35	43	1604.302326
sep	0	43	0
okt	316	43	14484.55814
nop	0	43	0
des	221	43	10130.02326
jumlah			78152.44186

sedimen yg masuk dr inlet 1 78,332,196
78.3322 ton/thn

Kali Sugutamu

inlet 2

bulan	kumulatif hujan harian >20mm	hujan saat pengukuran	volume air
jan	352	43	7146.419
feb	305	43	6192.209
mar	141	43	2862.628
apr	104	43	2111.442
mei	63	43	1279.047
jun	85	43	1725.698
jul	83	43	1685.093
agust	35	43	710.5814
sep	0	43	0
okt	316	43	6415.535
nop	0	43	0
des	221	43	4486.814
	jumlah		34615.47

sedimen yg masuk dr inlet 2

137,256,936
137.2569 ton/thn