

Lampiran 5

Output Uji Validitas Variabel X

Correlations

		skortotal	butir 1
skortotal	Pearson Correlation	1	.681*
	Sig. (2-tailed)		.030
	N	10	10
butir 1	Pearson Correlation	.681*	1
	Sig. (2-tailed)	.030	
	N	10	10

Correlations

		skortotal	butir 2
skortotal	Pearson Correlation	1	.603
	Sig. (2-tailed)		.065
	N	10	10
butir 2	Pearson Correlation	.603	1
	Sig. (2-tailed)	.065	
	N	10	10

*. Correlation is significant at the 0.05 level (2-tailed).

Correlations

		skortotal	butir 3
skortotal	Pearson Correlation	1	.646*
	Sig. (2-tailed)		.044
	N	10	10
butir 3	Pearson Correlation	.646*	1
	Sig. (2-tailed)	.044	
	N	10	10

Correlations

		skortotal	butir 4
skortotal	Pearson Correlation	1	.892**
	Sig. (2-tailed)		.001
	N	10	10
butir 4	Pearson Correlation	.892**	1
	Sig. (2-tailed)	.001	
	N	10	10

*. Correlation is significant at the 0.05 level (2-tailed).

** Correlation is significant at the 0.01 level (2-tailed).

Correlations

		skortotal	butir 5
skortotal	Pearson Correlation	1	.645*
	Sig. (2-tailed)		.044
	N	10	10
butir 5	Pearson Correlation	.645*	1
	Sig. (2-tailed)	.044	
	N	10	10

Correlations

		skortotal	butir 6
skortotal	Pearson Correlation	1	.601
	Sig. (2-tailed)		.066
	N	10	10
butir 6	Pearson Correlation	.601	1
	Sig. (2-tailed)	.066	
	N	10	10

*. Correlation is significant at the 0.05 level (2-tailed).

Correlations

		skortotal	butir 7
skortotal	Pearson Correlation	1	.646*
	Sig. (2-tailed)		.044
	N	10	10
butir 7	Pearson Correlation	.646*	1
	Sig. (2-tailed)	.044	
	N	10	10

*. Correlation is significant at the 0.05 level (2-tailed).

Correlations

		skortotal	butir 8
skortotal	Pearson Correlation	1	.892**
	Sig. (2-tailed)		.001
	N	10	10
butir 8	Pearson Correlation	.892**	1
	Sig. (2-tailed)	.001	
	N	10	10

** Correlation is significant at the 0.01 level (2-tailed).

Correlations

		skortotal	butir 9
skortotal	Pearson Correlation	1	.682*
	Sig. (2-tailed)		.030
	N	10	10
butir 9	Pearson Correlation	.682*	1
	Sig. (2-tailed)	.030	
	N	10	10

*. Correlation is significant at the 0.05 level (2-tailed).

Correlations

		skortotal	butir 10
skortotal	Pearson Correlation	1	.429
	Sig. (2-tailed)		.216
	N	10	10
butir 10	Pearson Correlation	.429	1
	Sig. (2-tailed)	.216	
	N	10	10

Correlations

		skortotal	butir 11
skortotal	Pearson Correlation	1	.645*
	Sig. (2-tailed)		.044
	N	10	10
butir 11	Pearson Correlation	.645*	1
	Sig. (2-tailed)	.044	
	N	10	10

*. Correlation is significant at the 0.05 level (2-tailed).

Correlations

		skortotal	butir 12
skortotal	Pearson Correlation	1	.681*
	Sig. (2-tailed)		.030
	N	10	10
butir 12	Pearson Correlation	.681*	1
	Sig. (2-tailed)	.030	
	N	10	10

*. Correlation is significant at the 0.05 level (2-tailed).

Correlations

		skortotal	butir 13
skortotal	Pearson Correlation	1	.892**
	Sig. (2-tailed)		.001
	N	10	10
butir 13	Pearson Correlation	.892**	1
	Sig. (2-tailed)	.001	
	N	10	10

** . Correlation is significant at the 0.01 level (2-tailed).

Correlations

		skortotal	butir 14
skortotal	Pearson Correlation	1	.603
	Sig. (2-tailed)		.065
	N	10	10
butir 14	Pearson Correlation	.603	1
	Sig. (2-tailed)	.065	
	N	10	10

Correlations

		skortotal	butir 15
skortotal	Pearson Correlation	1	.892**
	Sig. (2-tailed)		.001
	N	10	10
butir 15	Pearson Correlation	.892**	1
	Sig. (2-tailed)	.001	
	N	10	10

** . Correlation is significant at the 0.01 level (2-tailed).

Correlations

		skortotal	butir 16
skortotal	Pearson Correlation	1	.645*
	Sig. (2-tailed)		.044
	N	10	10
butir 16	Pearson Correlation	.645*	1
	Sig. (2-tailed)	.044	
	N	10	10

* . Correlation is significant at the 0.05 level (2-tailed).

Correlations

		skortotal	butir 17
skortotal	Pearson Correlation	1	.892**
	Sig. (2-tailed)		.001
	N	10	10
butir 17	Pearson Correlation	.892**	1
	Sig. (2-tailed)	.001	
	N	10	10

** . Correlation is significant at the 0.01 level (2-tailed).

Correlations

		skortotal	butir 18
skortotal	Pearson Correlation	1	.892**
	Sig. (2-tailed)		.001
	N	10	10
butir 18	Pearson Correlation	.892**	1
	Sig. (2-tailed)	.001	
	N	10	10

** . Correlation is significant at the 0.01 level (2-tailed).

Correlations

		skortotal	butir 19
skortotal	Pearson Correlation	1	.634*
	Sig. (2-tailed)		.049
	N	10	10
butir 19	Pearson Correlation	.634*	1
	Sig. (2-tailed)	.049	
	N	10	10

Correlations

		skortotal	butir 20
skortotal	Pearson Correlation	1	.610
	Sig. (2-tailed)		.061
	N	10	10
butir 20	Pearson Correlation	.610	1
	Sig. (2-tailed)	.061	
	N	10	10

*. Correlation is significant at the 0.05 level (2-tailed).

Lampiran 7

Output Uji Reliabilitas Variabel X

Case Processing Summary

		N	%
Cases	Valid	10	100.0
	Excluded ^a	0	.0
	Total	10	100.0

a. Listwise deletion based on all variables in the procedure.

Reliability Statistics

Cronbach's Alpha	N of Items
.896	20

Lampiran 8

Output Uji Reliabilitas Variabel Y

Case Processing Summary

		N	%
Cases	Valid	10	100.0
	Excluded ^a	0	.0
	Total	10	100.0

a. Listwise deletion based on all variables in the procedure.

Reliability Statistics

Cronbach's Alpha	N of Items
.863	15

37	0	1	1	1	1	0	0	1	1	1	1	1	1	1	0	0	1	1	1	1	15
38	1	1	1	0	1	1	0	0	1	1	0	0	1	1	0	1	1	1	1	1	14
39	1	1	1	1	0	1	0	1	1	1	0	1	1	1	1	1	1	1	0	1	16
40	1	1	1	1	1	0	1	1	1	1	0	1	1	1	1	0	1	1	1	1	17
41	1	0	1	1	1	0	1	1	1	1	0	1	1	1	0	0	1	1	1	1	15
42	0	0	1	1	1	1	0	1	1	1	0	1	1	1	0	1	1	1	1	1	15
43	0	0	0	0	1	0	0	0	0	1	0	0	0	0	0	0	0	0	1	1	4
44	0	1	1	1	1	0	1	1	1	1	1	1	1	1	1	0	1	1	0	1	16
45	1	1	1	0	1	1	1	1	1	1	1	1	1	1	1	0	1	1	1	1	18
46	1	1	1	0	1	0	0	1	1	1	1	1	1	1	0	0	1	1	0	1	14
47	1	1	1	0	1	0	1	1	1	1	1	1	1	1	1	0	1	1	1	1	17
48	1	1	1	0	1	0	0	1	1	1	1	1	1	1	0	0	1	1	0	1	14
49	1	1	1	0	1	0	0	1	1	1	1	1	1	1	0	0	1	1	0	1	14
50	1	1	1	1	1	0	0	1	1	1	1	1	1	1	0	0	1	1	1	1	16
51	1	1	1	1	1	0	1	1	0	1	0	1	1	1	0	0	1	1	1	1	15
52	1	0	1	1	1	1	0	1	1	1	1	1	0	1	1	1	1	1	1	1	17
53	0	1	1	0	1	0	1	1	1	1	1	1	1	1	0	1	1	1	1	1	16
54	0	0	0	1	0	0	0	0	0	0	0	1	0	0	0	1	0	0	0	0	3
55	1	0	1	0	0	0	1	1	1	1	1	1	1	1	0	0	1	1	0	1	13
56	1	1	1	1	1	1	1	1	1	1	1	1	1	1	1	1	1	1	1	1	20
57	0	0	1	0	1	0	1	1	0	1	1	1	1	0	1	0	1	1	1	1	13
58	1	1	1	1	1	1	1	1	1	1	1	1	1	1	1	0	1	1	1	1	19
59	1	1	1	1	1	1	1	1	1	1	1	1	1	1	1	0	1	1	1	1	19
60	1	1	1	1	1	1	1	1	1	1	1	1	1	1	1	0	1	1	1	1	19
61	1	1	1	1	1	1	1	1	1	1	1	1	1	1	1	0	1	1	1	1	19
62	1	1	1	1	1	1	1	1	1	1	1	1	1	1	1	0	1	1	1	1	19
63	1	1	1	0	1	0	1	1	1	1	1	1	1	1	1	0	1	1	1	1	17
64	1	1	1	1	0	1	1	1	1	1	1	0	1	1	1	1	1	1	1	1	18
65	1	1	0	1	1	0	1	1	1	1	1	1	0	1	1	0	0	0	1	1	14
66	0	1	1	1	1	1	1	1	1	1	1	1	1	1	1	0	1	1	1	1	18
67	0	1	1	0	1	0	1	1	1	1	1	1	1	1	0	1	1	1	1	1	16
68	1	1	0	1	1	0	1	1	1	1	1	1	0	1	1	0	0	0	1	1	14
69	1	0	1	0	0	0	1	1	1	1	1	1	1	1	0	1	1	1	0	1	14
70	1	1	1	1	1	1	1	1	1	1	1	1	1	1	1	0	1	1	1	1	19
71	0	0	1	0	1	0	1	1	0	1	1	1	1	0	1	1	1	1	1	1	14
72	0	0	1	1	0	0	1	1	0	0	0	1	1	1	1	1	1	1	1	1	13
73	0	1	0	1	0	0	0	0	0	0	0	0	0	0	0	1	0	0	0	0	3

Lampiran 10 Nilai Variabel X dan Skor Variabel Y

No.Res	ΣX	ΣY
1	8	27
2	18	34
3	10	32
4	14	57
5	18	32
6	17	29
7	17	22
8	20	35
9	17	41
10	19	58
11	16	28
12	17	40
13	16	33
14	12	33
15	17	29
16	18	47
17	20	50
18	20	50
19	14	24
20	14	31
21	15	30
22	13	24
23	13	25
24	16	23
25	15	25
26	19	24
27	16	44
28	12	38
29	14	26
30	19	46
31	12	24
32	16	42
33	13	27
34	16	32
35	12	31
36	19	37

37	15	20
38	14	33
39	16	38
40	17	34
41	15	31
42	15	54
43	4	15
44	16	32
45	18	33
46	14	15
47	17	19
48	14	20
49	14	20
50	16	21
51	15	30
52	17	39
53	16	50
54	3	31
55	13	30
56	20	60
57	13	39
58	19	21
59	19	25
60	19	25
61	19	15
62	19	25
63	17	24
64	18	60
65	14	49
66	18	34
67	16	37
68	14	27
69	14	33
70	19	32
71	14	37
72	13	31
73	3	19

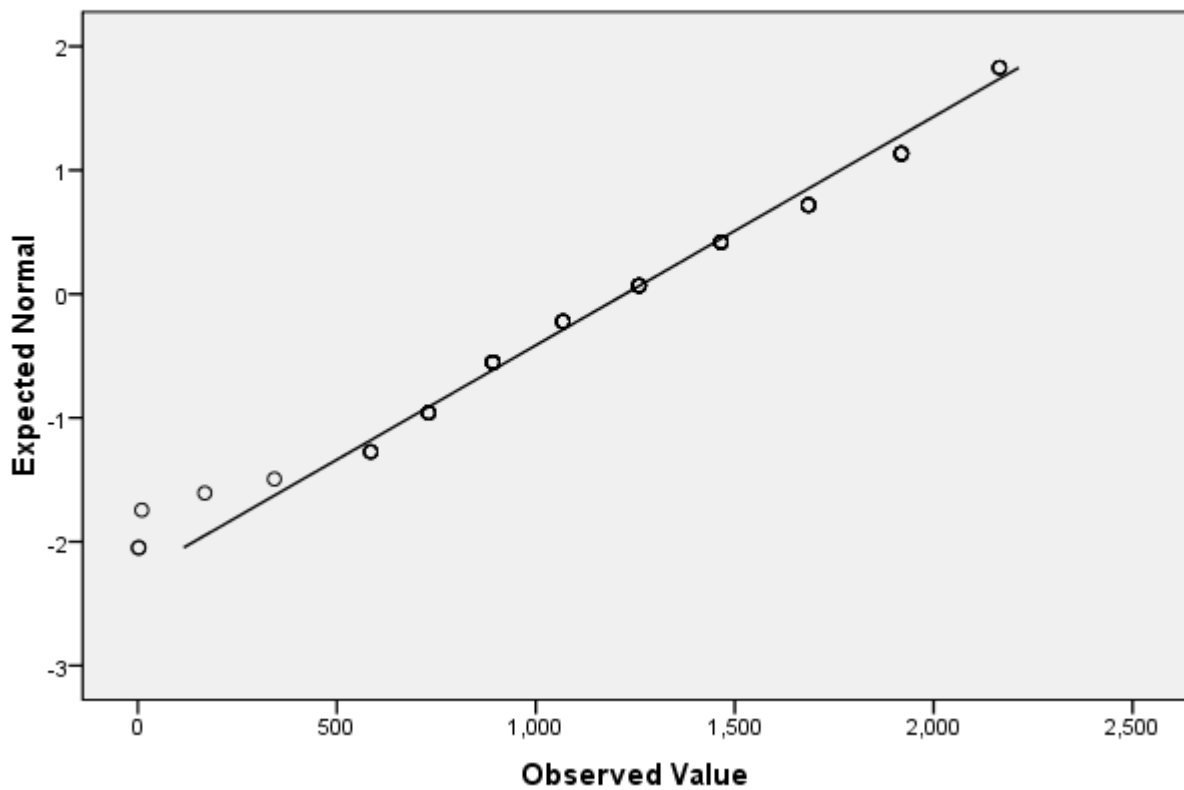
Lampiran 11

Output Uji Normalitas Variabel X

	Kolmogorov-Smirnov ^a			Shapiro-Wilk		
	Statistic	df	Sig.	Statistic	df	Sig.
pengetahuanmitigasibanjir	.100	73	.066	.963	73	.033

a. Lilliefors Significance Correction

Normal Q-Q Plot of pengetahuanmitigasibanjir



Lampiran 12

Output Uji Normalitas Variabel Y

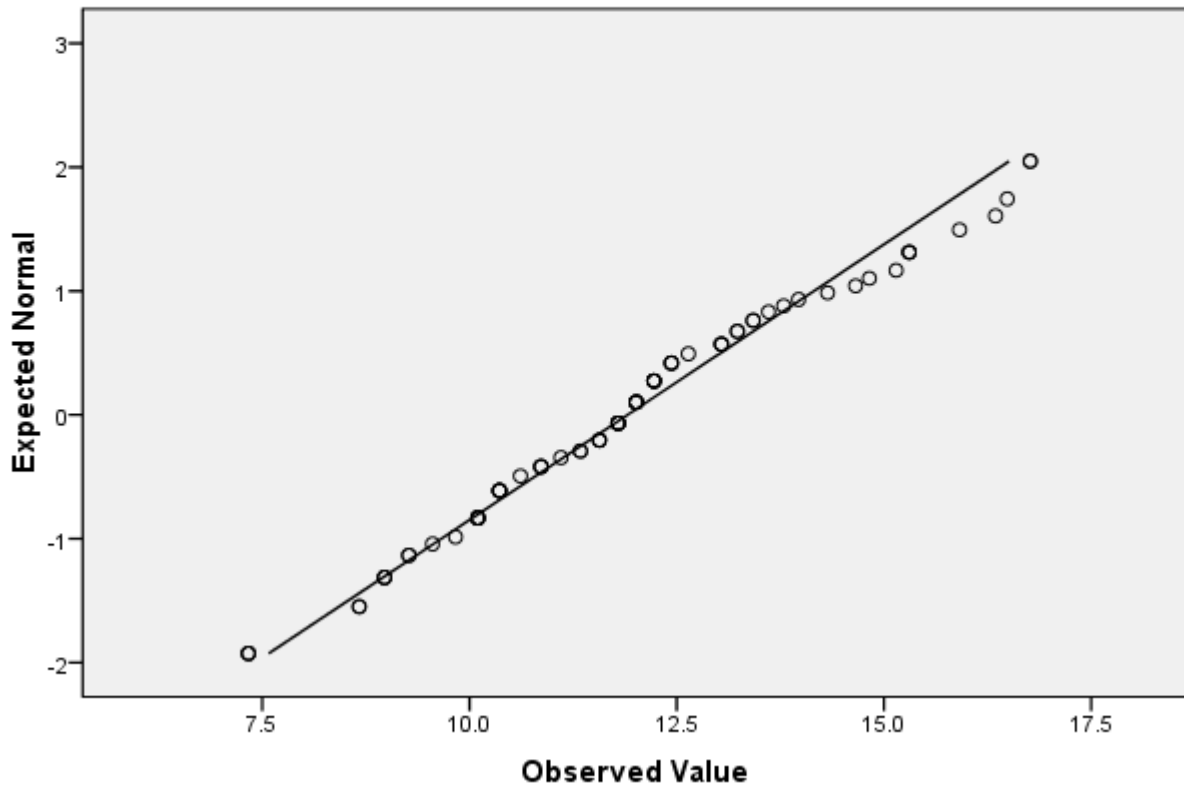
Tests of Normality

	Kolmogorov-Smirnov ^a			Shapiro-Wilk		
	Statistic	df	Sig.	Statistic	df	Sig.
kepedulianlingkungan	.092	73	.200 [*]	.978	73	.234

a. Lilliefors Significance Correction

*. This is a lower bound of the true significance.

Normal Q-Q Plot of kepedulianlingkungan



Lampiran 13

Output Frekuensi Variabel X

Pengetahuan Mitigasi Banjir

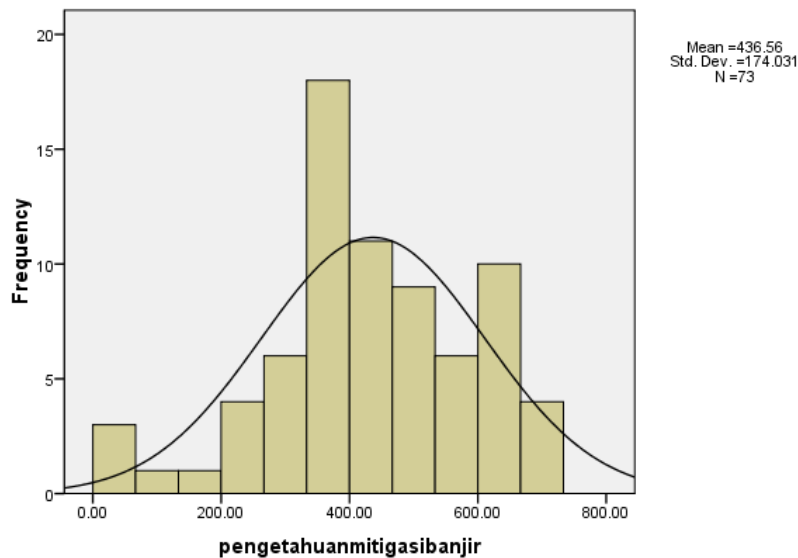
	Frequency	Percent	Valid Percent	Cumulative Percent
Valid 3	2	2.7	2.7	2.7
4	1	1.4	1.4	4.1
8	1	1.4	1.4	5.5
10	1	1.4	1.4	6.8
12	4	5.5	5.5	12.3
13	6	8.2	8.2	20.5
14	12	16.4	16.4	37.0
15	6	8.2	8.2	45.2
16	11	15.1	15.1	60.3
17	9	12.3	12.3	72.6
18	6	8.2	8.2	80.8
19	10	13.7	13.7	94.5
20	4	5.5	5.5	100.0
Tota l	73	100.0	100.0	

Statistics

X2

N	Valid	73
	Missing	0
Mean		15.3288
Std. Error of Mean		.41566
Median		16.0000
Mode		14.00
Std. Deviation		3.55143
Variance		12.613
Range		17.00
Minimum		3.00
Maximum		20.00

Histogram



Lampiran 14

Output Frekuensi Variabel Y

Kepedulian Lingkungan

	Frequency	Percent	Valid Percent	Cumulative Percent
Valid 15	3	4.1	4.1	4.1
19	2	2.7	2.7	6.8
20	3	4.1	4.1	11.0
21	2	2.7	2.7	13.7
22	1	1.4	1.4	15.1
23	1	1.4	1.4	16.4
24	5	6.8	6.8	23.3
25	5	6.8	6.8	30.1
26	1	1.4	1.4	31.5
27	3	4.1	4.1	35.6
28	1	1.4	1.4	37.0
29	2	2.7	2.7	39.7
30	3	4.1	4.1	43.8
31	5	6.8	6.8	50.7
32	5	6.8	6.8	57.5
33	5	6.8	6.8	64.4
34	3	4.1	4.1	68.5
35	1	1.4	1.4	69.9
37	3	4.1	4.1	74.0
38	2	2.7	2.7	76.7
39	2	2.7	2.7	79.5
40	1	1.4	1.4	80.8
41	1	1.4	1.4	82.2
42	1	1.4	1.4	83.6
44	1	1.4	1.4	84.9
46	1	1.4	1.4	86.3
47	1	1.4	1.4	87.7
49	1	1.4	1.4	89.0
50	3	4.1	4.1	93.2
54	1	1.4	1.4	94.5
57	1	1.4	1.4	95.9
58	1	1.4	1.4	97.3
60	2	2.7	2.7	100.0
Total	73	100.0	100.0	

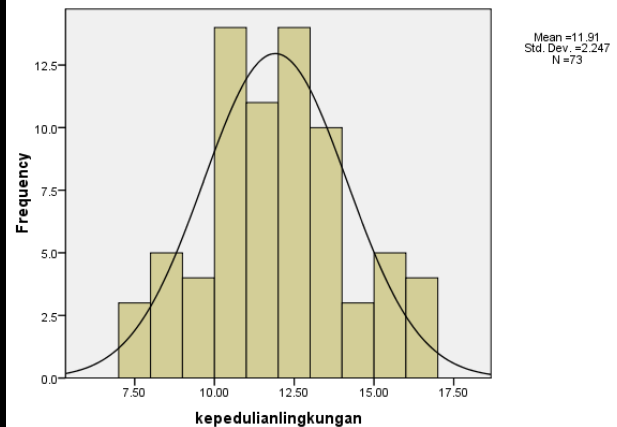
Statistics

Y2

N	Valid	73
	Missing	0
Mean		32.7123
Std. Error of Mean		1.26757
Median		31.0000
Mode		24.00 ^a
Std. Deviation		1.08301E1
Variance		117.291
Range		45.00
Minimum		15.00
Maximum		60.00

a. Multiple modes exist. The smallest value is shown

Histogram



Lampiran 15

Output Uji Linearitas

Case Processing Summary

	Cases					
	Included		Excluded		Total	
	N	Percent	N	Percent	N	Percent
Kepedulian lingkungan * pengetahuan mitigasibanjir	73	100.0%	0	.0%	73	100.0%

Measures of Association

	R	R Squared	Eta	Eta Squared
Kepedulian lingkungan * pengetahuan mitigasibanjir	.300	.090	.500	.250

Report

Kepedulian lingkungan

Pengetahuan Mitigasi banjir	Mean	N	Std. Deviation
1.9315731862937	10.2310	2	2.20797
9.83984363167508	7.3335	1	.
168.122953300573	10.8625	1	.
343.170399975163	12.0113	1	.
585.019777034666	11.8375	4	1.30591
730.384525877394	11.3510	6	1.20937
891.5419296916	11.4696	12	2.58566
1068.0632607306	11.6960	6	2.32402
1259.49998485441	12.3925	11	1.84657
1465.39582610361	11.5841	9	1.87086
1685.29501173807	13.4491	6	1.92332
1918.74786120715	11.3982	10	2.69899
2165.31451532861	15.0030	4	1.71876
Total	11.9068	73	2.24745

ANOVA Table

			Sum of Squares	df	Mean Square	F	Sig.
Kepedulian lingkungan * pengetahuan mitigasibanjir	Between Groups	(Combined)	90.803	12	7.567	1.664	.098
		Linearity	32.788	1	32.788	7.210	.009
		Deviation from Linearity	58.015	11	5.274	1.160	.334
	Within Groups		272.870	60	4.548		
	Total		363.673	72			

Lampiran 16

Output Regresi dan Uji T

Descriptive Statistics

	Mean	Std. Deviation	N
Kepedulian lingkungan	32.7123	10.83010	73
Pengetahuan mitigasibanjir	15.3288	3.55143	73

Correlations

		Kepedulian lingkungan	Pengetahuan Mitigasi banjir
Pearson Correlation	kepedulianlingkungan	1.000	.311
	pengetahuanmitigasibanjir	.311	1.000
Sig. (1-tailed)	kepedulianlingkungan	.	.004
	pengetahuanmitigasibanjir	.004	.
N	kepedulianlingkungan	73	73
	pengetahuanmitigasibanjir	73	73

Variables Entered/Removed^b

Model	Variables Entered	Variables Removed	Method
1	pengetahuanmitigasibanjir ^a		. Enter

a. All requested variables entered.

b. Dependent Variable: kepedulianlingkungan

ANOVA^b

Model		Sum of Squares	df	Mean Square	F	Sig.
1	Regression	814.258	1	814.258	7.576	.008 ^a
	Residual	7630.701	71	107.475		
	Total	8444.959	72			

a. Predictors: (Constant), pengetahuanmitigasibanjir

b. Dependent Variable: kepedulianlingkungan

Coefficients^a

Model		Unstandardized Coefficients		Standardized Coefficients	t	Sig.
		B	Std. Error	Beta		
1	(Constant)	18.197	5.411		3.363	.001
	pengetahuanmitigasibanjir	.947	.344	.311	2.753	.008

a. Dependent Variable: kepedulianlingkungan

Lampiran 17

Data Hasil Penelitian (Per Indikator)

Tabulasi Pengetahuan Masyarakat tentang Mitigasi Banjir

No. Res.	Pengetahuan Mitigasi Banjir (X) No. Soal																								
	Teknis							Penyuluhan					Pelatihan		Penyebaran info			Rencana Tindak			Jml				
	1	2	3	4	5	6	7	Jml	8	9	10	11	12	Jml	13	14	Jml	15	16	17		Jml	18	19	20
1	1	1	1	0	1	0	1	5	1	0	1	0	0	2	0	1	1	0	0	0	0	0	0	0	
2	1	1	1	0	1	1	1	6	1	1	1	1	1	5	1	1	2	1	0	1	2	1	1	1	3
3	1	0	0	0	1	0	1	3	1	0	0	0	1	2	1	1	2	0	0	1	1	1	1	0	2
4	0	1	1	0	1	0	1	4	1	0	0	1	1	3	1	1	2	0	1	1	2	1	1	1	3
5	1	1	1	1	1	0	1	6	1	1	1	1	1	5	1	1	2	0	1	1	2	1	1	1	3
6	1	0	1	1	1	0	1	5	1	1	1	1	1	5	1	1	2	1	1	1	3	1	1	0	2
7	1	1	1	1	1	0	1	6	1	1	1	1	1	5	1	1	2	0	0	1	1	1	1	1	3
8	1	1	1	1	1	1	1	7	1	1	1	1	1	5	1	1	2	1	1	1	3	1	1	1	3
9	0	1	1	1	0	1	1	5	1	0	1	1	1	4	1	1	2	1	1	1	3	1	1	1	3
10	1	1	1	0	1	1	1	6	1	1	1	1	1	5	1	1	2	1	1	1	3	1	1	1	3
11	1	1	1	1	1	0	0	5	1	1	1	1	1	5	1	1	2	0	1	1	2	1	0	1	2
12	1	1	1	1	0	1	1	6	1	1	1	1	1	5	0	1	1	0	1	1	2	1	1	1	3
13	1	1	0	1	1	1	0	5	1	1	1	0	1	4	1	1	2	1	0	1	2	1	1	1	3
14	0	1	1	0	1	0	0	3	1	1	0	0	1	3	1	1	2	0	0	1	1	1	1	1	3
15	1	1	1	1	1	0	0	5	1	1	1	1	1	5	1	0	1	1	1	1	3	1	1	1	3
16	1	1	1	1	1	0	1	6	1	1	1	1	1	5	1	1	2	1	0	1	2	1	1	1	3
17	1	1	1	1	1	1	1	7	1	1	1	1	1	5	1	1	2	1	1	1	3	1	1	1	3
18	1	1	1	1	1	1	1	7	1	1	1	1	1	5	1	1	2	1	1	1	3	1	1	1	3
19	1	1	0	0	0	1	0	3	1	1	1	1	1	5	1	1	2	0	0	1	1	1	1	1	3
20	1	1	1	0	1	0	0	4	1	0	1	0	1	3	1	1	2	0	1	1	2	1	1	1	3
21	1	1	1	0	1	0	0	4	1	1	1	1	1	5	1	1	2	0	0	1	1	1	1	1	3
22	1	1	1	0	1	0	0	4	1	1	0	1	1	4	1	0	1	0	0	1	1	1	1	1	3
23	1	1	1	0	1	0	1	5	1	0	1	0	1	3	1	0	1	1	1	0	2	0	1	1	2
24	1	1	1	0	1	0	0	4	1	1	1	1	1	5	1	1	2	1	0	1	2	1	1	1	3
25	1	1	1	0	1	0	1	5	1	1	1	1	0	4	1	1	2	0	0	1	1	1	0	1	2
26	1	1	1	1	1	1	1	7	1	1	1	1	1	5	1	1	2	1	0	1	2	1	1	1	3
27	1	1	1	1	1	1	1	7	1	1	1	0	1	4	1	1	2	0	1	1	2	1	0	0	1
28	0	1	0	0	1	1	0	3	1	1	1	0	1	4	1	1	2	1	0	0	1	0	1	1	2
29	1	1	0	0	1	1	0	4	1	0	1	0	1	3	1	1	2	1	0	1	2	1	1	1	3
30	1	1	1	1	1	1	1	7	1	1	1	1	1	5	1	1	2	1	0	1	2	1	1	1	3
31	1	1	0	1	0	1	0	4	1	1	1	0	1	4	1	1	2	0	0	0	0	0	1	1	2
32	1	1	1	0	1	0	0	4	1	1	1	1	1	5	0	1	1	1	1	1	3	1	1	1	3
33	1	0	1	1	0	0	0	3	1	1	1	1	1	5	1	1	2	0	0	1	1	1	0	1	2
34	0	1	1	1	1	0	1	5	1	1	1	0	1	4	1	1	2	1	1	1	3	1	1	0	2
35	1	1	0	1	0	1	1	5	1	1	1	0	0	3	0	0	0	1	1	0	2	0	1	1	2
36	1	1	1	1	1	0	1	6	1	1	1	1	1	5	1	1	2	1	1	1	3	1	1	1	3
37	0	1	1	1	1	0	0	4	1	1	1	1	1	5	1	1	2	0	0	1	1	1	1	1	3
38	1	1	1	0	1	1	0	5	0	1	1	0	0	2	1	1	2	0	1	1	2	1	1	1	3

39	1	1	1	1	0	1	0	5	1	1	1	0	1	4	1	1	2	1	1	1	3	1	0	1	2
40	1	1	1	1	1	0	1	6	1	1	1	0	1	4	1	1	2	1	0	1	2	1	1	1	3
41	1	0	1	1	1	0	1	5	1	1	1	0	1	4	1	1	2	0	0	1	1	1	1	1	3
42	0	0	1	1	1	1	0	4	1	1	1	0	1	4	1	1	2	0	1	1	2	1	1	1	3
43	0	0	0	0	1	0	0	1	0	0	1	0	0	3	0	0	0	0	0	0	0	0	1	1	2
44	0	1	1	1	1	0	1	5	1	1	1	1	1	5	1	1	2	1	0	1	2	1	0	1	2
45	1	1	1	0	1	1	1	6	1	1	1	1	1	5	1	1	2	1	0	1	2	1	1	1	3
46	1	1	1	0	1	0	0	4	1	1	1	1	1	5	1	1	2	0	0	1	1	1	0	1	2
47	1	1	1	0	1	0	1	5	1	1	1	1	1	5	1	1	2	1	0	1	2	1	1	1	3
48	1	1	1	0	1	0	0	4	1	1	1	1	1	5	1	1	2	0	0	1	1	1	0	1	2
49	1	1	1	0	1	0	0	4	1	1	1	1	1	5	1	1	2	0	0	1	1	1	0	1	2
50	1	1	1	1	1	0	0	5	1	1	1	1	1	5	1	1	2	0	0	1	1	1	1	1	3
51	1	1	1	1	1	0	1	6	1	0	1	0	1	3	1	1	2	0	0	1	1	1	1	1	3
52	1	0	1	1	1	1	0	5	1	1	1	1	1	5	0	1	1	1	1	1	3	1	1	1	3
53	0	1	1	0	1	0	1	4	1	1	1	1	1	5	1	1	2	0	1	1	2	1	1	1	3
54	0	0	0	1	0	0	0	1	0	0	0	0	1	1	0	0	0	0	1	0	1	0	0	0	0
55	1	0	1	0	0	0	1	3	1	1	1	1	1	5	1	1	2	0	0	1	1	1	0	1	2
56	1	1	1	1	1	1	1	7	1	1	1	1	1	5	1	1	2	1	1	1	3	1	1	1	3
57	0	0	1	0	1	0	1	3	1	0	1	1	1	4	1	0	1	1	0	1	2	1	1	1	3
58	1	1	1	1	1	1	1	7	1	1	1	1	1	5	1	1	2	1	0	1	2	1	1	1	3
59	1	1	1	1	1	1	1	7	1	1	1	1	1	5	1	1	2	1	0	1	2	1	1	1	3
60	1	1	1	1	1	1	1	7	1	1	1	1	1	5	1	1	2	1	0	1	1	1	1	1	2
61	1	1	1	1	1	1	1	7	1	1	1	1	1	5	1	1	2	1	0	1	1	1	1	1	2
62	1	1	1	1	1	1	1	7	1	1	1	1	1	5	1	1	2	1	0	1	1	1	1	1	2
63	1	1	1	0	1	0	1	5	1	1	1	1	1	5	1	1	2	1	0	1	1	1	1	1	2
64	1	1	1	1	0	1	1	6	1	1	1	1	0	4	1	1	2	1	1	1	2	1	1	1	2
65	1	1	0	1	1	0	1	5	1	1	1	1	1	5	0	1	1	1	0	0	0	0	1	1	2
66	0	1	1	1	1	1	1	6	1	1	1	1	1	5	1	1	2	1	0	1	1	1	1	1	2
67	0	1	1	0	1	0	1	4	1	1	1	1	1	5	1	1	2	0	1	1	2	1	1	1	2
68	1	1	0	1	1	0	1	5	1	1	1	1	1	5	0	1	1	1	0	0	0	0	1	1	2
69	1	0	1	0	0	0	1	3	1	1	1	1	1	5	1	1	2	0	1	1	2	1	0	1	1
70	1	1	1	1	1	1	1	7	1	1	1	1	1	5	1	1	2	1	0	1	1	1	1	1	2
71	0	0	1	0	1	0	1	3	1	0	1	1	1	4	1	0	1	1	1	1	2	1	1	1	2
72	0	0	1	1	0	0	1	3	1	0	0	0	1	2	1	1	2	1	1	1	2	1	1	1	2
73	0	1	0	1	0	0	0	2	0	0	0	0	0	0	0	0	0	1	0	0	0	0	0	0	0